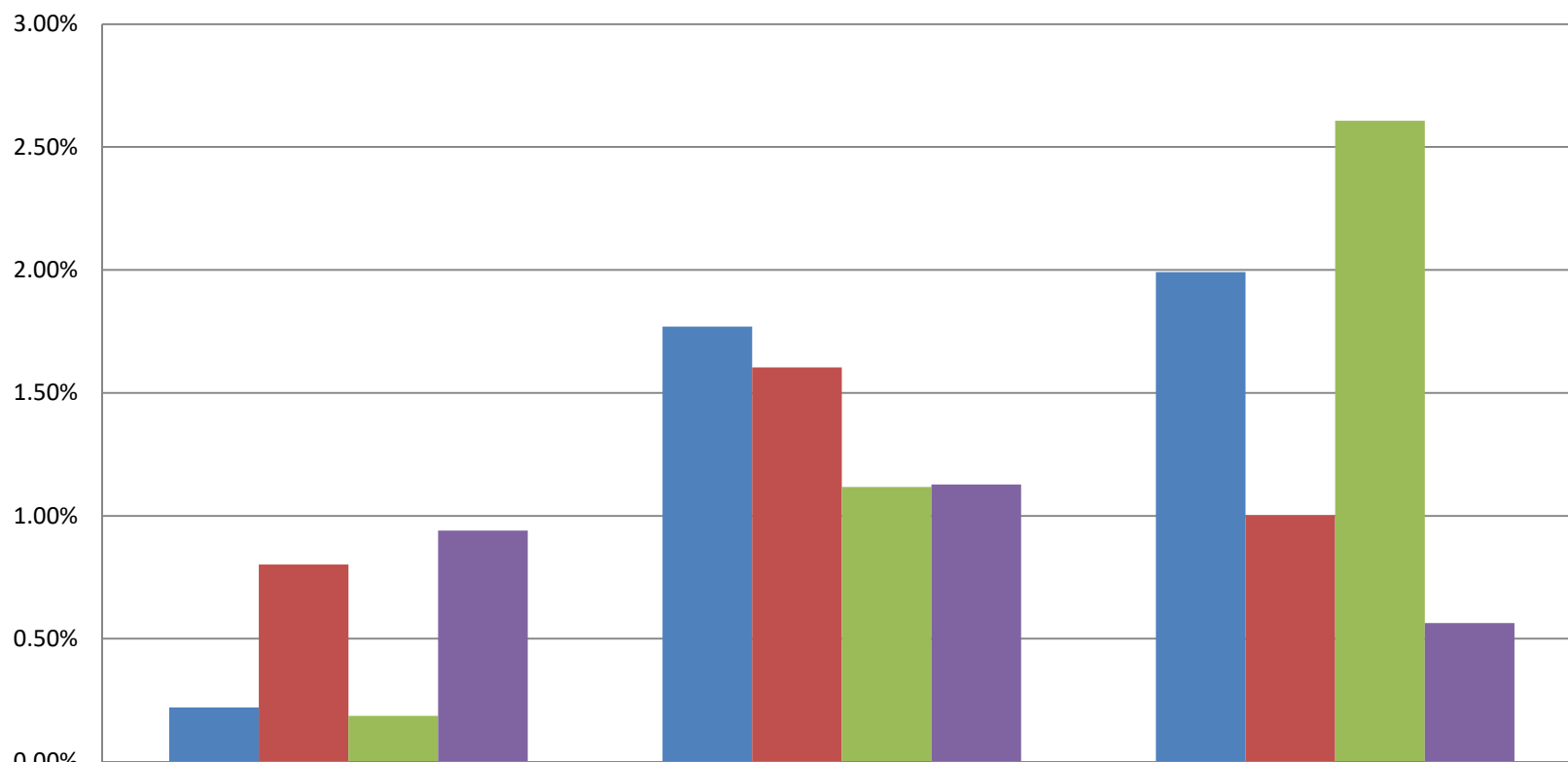


Meridian Surgery Center Yearly Outcome Rates 2013-2016



	Post-op Complications	Hospitalizations	Infection Rate
2013 Year End Total	0.22%	1.77%	1.99%
2014 Year End Total	0.80%	1.60%	1.00%
2015 Year End Total	0.19%	1.12%	2.61%
2016 Year End Total	0.94%	1.13%	0.56%

Published Centers for Medicare and Medicaid Services (CMS) - Physician Quality Reporting Initiative, data shows that Meridian Surgery Center achieves significantly lower rates of infection than are reported by hospitals for all Washington State, including Pierce and King Counties. Meridian Surgery Center's model of care presented in these quality data reports stresses surgical care quality, service and cost savings, which is consistent with the triple aim that is the primary goal of ACOs. Compared with hospital outpatient settings in Pierce County and King Counties in Washington State, Meridian Surgery Center achieves a significant cost savings.